

SUBMIT

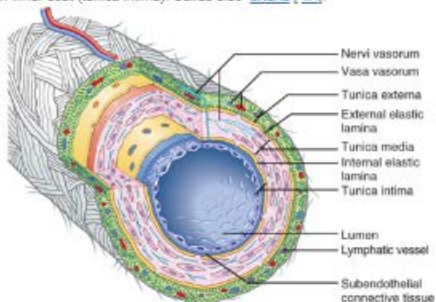
## Related Matches

- accompanying artery of median nerve ▲
- accompanying artery of sciatic nerve ■
- acetabular artery
- acromiothoracic artery
- adrenal artery, middle
- afferent artery of glomerulus
- alveolar artery, inferior
- alveolar artery, posterior superior
- anastomotic atrial artery
- angular artery
- anterior spinal artery syndrome
- appendicular artery ▼
- artrate artery of foot

## artery

ar-te-ry  
[Gr. art]

a vessel through which the blood passes away from the heart to the various parts of the body. The wall of an artery consists typically of an outer coat (tunica externa), a middle coat (tunica media), and an inner coat (tunica intima). Called also [arteria](#) [TA].



Copyright Elsevier 2012. All rights reserved.

Diagrammatic representation of the principal structural features of a large muscular artery.

