

## Index to Diseases

## Abnormal, abnormality, abnormalities

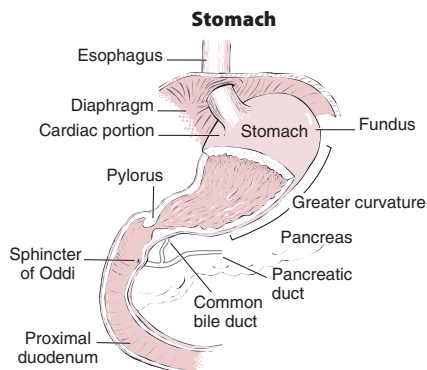
## A

**AAT** (alpha-1 antitrypsin) deficiency 273.4  
**AAV** (disease) (illness) (infection) — see Human immunodeficiency virus (disease) (illness) (infection)  
**Abactio** — see Abortion, induced  
**Abactus venter** — see Abortion, induced  
**Abarognosis** 781.99  
**Abasia** (-astasia) 307.9  
 atactia 781.3  
 choreic 781.3  
 hysterical 300.11  
 paroxysmal trepidant 781.3  
 spastic 781.3  
 trembling 781.3  
 trepidans 781.3  
**Abderhalden-Kaufmann-Lignac syndrome** (cystinosis) 270.0  
**Abdomen, abdominal** — see also condition  
 accordion 306.4  
 acute 789.0 **✓**  
 angina 557.1  
 burst 868.00  
 convulsive equivalent (see also Epilepsy) 345.5 **✓**  
 heart 746.87  
 muscle deficiency syndrome 756.79  
 obstipum 756.79  
**Abdominalgia** 789.0 **✓**  
 periodic 277.31  
**Abduction contracture, hip or other joint** — see Contraction, joint  
**Abercrombie's syndrome** (amyloid degeneration) 277.39  
**Aberrant** (congenital) — see also Malposition, congenital  
 adrenal gland 759.1  
 blood vessel NEC 747.60  
 arteriovenous NEC 747.60  
 cerebrovascular 747.81  
 gastrointestinal 747.61  
 lower limb 747.64  
 renal 747.62  
 spinal 747.82  
 upper limb 747.63  
 breast 757.6  
 endocrine gland NEC 759.2  
 gastrointestinal vessel (peripheral) 747.61  
 hepatic duct 751.69  
 lower limb vessel (peripheral) 747.64  
 pancreas 751.7  
 parathyroid gland 759.2  
 peripheral vascular vessel NEC 747.60  
 pituitary gland (pharyngeal) 759.2  
 renal blood vessel 747.62  
 sebaceous glands, mucous membrane, mouth 750.26  
 spinal vessel 747.82  
 spleen 759.0  
 testis (descent) 752.51  
 thymus gland 759.2  
 thyroid gland 759.2  
 upper limb vessel (peripheral) 747.63  
**Aberratio**  
 lactis 757.6  
 testis 752.51  
**Aberration** — see also Anomaly  
 chromosome — see Anomaly, chromosome(s)  
 distal 368.9  
 mental (see also Disorder, mental, nonpsychotic) 300.9  
**Abetalipoproteinemia** 272.5  
**Abionarce** 780.79  
**Abiotrophy** 799.89  
**Ablatio**  
 placentae — see Placenta, ablatio  
 retinae (see also Detachment, retina) 361.9  
**Ablation**  
 pituitary (gland) (with hypofunction) 253.7  
 placenta — see Placenta, ablatio  
 uterus 621.8  
**Ablepharia, ablepharon, ablephary** 743.62  
**Ablepsia** — see Blindness  
**Ablepsy** — see Blindness

**Ablutomania** 300.3  
**Abnormal, abnormality, abnormalities** — see also Anomaly  
 acid-base balance 276.4  
 fetus or newborn — see Distress, fetal  
 adaptation curve, dark 368.63  
 alveolar ridge 525.9  
 amnion 658.9 **✓**  
 affecting fetus or newborn 762.9  
 anatomical relationship NEC 759.9  
 apertures, congenital, diaphragm 756.6  
 auditory perception NEC 388.40  
 autosomes NEC 758.5  
 13 758.1  
 18 758.2  
 21 or 22 758.0  
 D<sub>1</sub> 758.1  
 E<sub>3</sub> 758.2  
 G 758.0  
 ballistocardiogram 794.39  
 basal metabolic rate (BMR) 794.7  
 biosynthesis, testicular androgen 257.2  
 blood level (of)  
 cobalt 790.6  
 copper 790.6  
 iron 790.6  
 lead 790.6  
 lithium 790.6  
 magnesium 790.6  
 mineral 790.6  
 zinc 790.6  
 blood pressure  
 elevated (without diagnosis of hypertension) 796.2  
 low (see also Hypotension) 458.9  
 reading (incidental) (isolated) (non-specific) 796.3  
 blood sugar 790.29  
 bowel sounds 787.5  
 breathing behavior — see Respiration  
 caloric test 794.19  
 cervix (acquired) NEC 622.9  
 congenital 752.40  
 in pregnancy or childbirth 654.6 **✓**  
 causing obstructed labor 660.2 **✓**  
 affecting fetus or newborn 763.1  
 chemistry, blood NEC 790.6  
 chest sounds 786.7  
 chorion 658.9 **✓**  
 affecting fetus or newborn 762.9  
 chromosomal NEC 758.89  
 analysis, nonspecific result 795.2  
 autosomes (see also Abnormal, autosomes NEC) 758.5  
 fetal, (suspected) affecting management of pregnancy 655.1 **✓**  
 sex 758.81  
 clinical findings NEC 796.4  
 communication — see Fistula  
 configuration of pupils 379.49  
 coronary  
 artery 746.85  
 vein 746.9  
 cortisol-binding globulin 255.8  
 course, Eustachian tube 744.24  
 creatinine clearance 794.4  
 dentofacial NEC 524.9  
 functional 524.50  
 specified type NEC 524.89  
 development, developmental NEC 759.9  
 bone 756.9  
 central nervous system 742.9  
 direction, teeth 524.30  
 Dynia (see also Defect, coagulation) 286.9  
 Ebstein 746.2  
 echocardiogram 793.2  
 echoencephalogram 794.01  
 echogram NEC — see Findings, abnormal, structure  
 electrocardiogram (ECG) (EKG) 794.31  
 electroencephalogram (EEG) 794.02  
 electromyogram (EMG) 794.17  
 ocular 794.14  
 electro-oculogram (EOG) 794.12  
 electroretinogram (ERG) 794.11  
 erythrocytes 289.9

**Abnormal, abnormality, abnormalities** — see also Anomaly — continued  
 erythrocytes — continued  
 congenital, with perinatal jaundice 282.9 [774.0]  
 Eustachian valve 746.9  
 excitability under minor stress 301.9  
 fat distribution 782.9  
 feces 787.7  
 fetal heart rate — see Distress, fetal  
 fetus NEC  
 affecting management of pregnancy — see Pregnancy, management affected by, fetal  
 causing disproportion 653.7 **✓**  
 affecting fetus or newborn 763.1  
 causing obstructed labor 660.1 **✓**  
 affecting fetus or newborn 763.1  
 findings without manifest disease — see Findings, abnormal  
 fluid  
 amniotic 792.3  
 cerebrospinal 792.0  
 peritoneal 792.9  
 pleural 792.9  
 synovial 792.9  
 vaginal 792.9  
 forces of labor NEC 661.9 **✓**  
 affecting fetus or newborn 763.7  
 form, teeth 520.2  
 function studies  
 auditory 794.15  
 bladder 794.9  
 brain 794.00  
 cardiovascular 794.30  
 endocrine NEC 794.6  
 kidney 794.4  
 liver 794.8  
 nervous system  
 central 794.00  
 peripheral 794.19  
 oculomotor 794.14  
 pancreas 794.9  
 placenta 794.9  
 pulmonary 794.2  
 retina 794.11  
 special senses 794.19  
 spleen 794.9  
 thyroid 794.5  
 vestibular 794.16  
 gait 781.2  
 hysterical 300.11  
 gastrin secretion 251.5  
 globulin  
 cortisol-binding 255.8  
 thyroid-binding 246.8  
 glucagon secretion 251.4  
 glucose 790.29  
 in pregnancy, childbirth, or puerperium 648.8 **✓**  
 fetus or newborn 775.0  
 non-fasting 790.29  
 gravitational (G) forces or states 994.9  
 hair NEC 704.2  
 hard tissue formation in pulp 522.3  
 head movement 781.0  
 heart  
 rate  
 fetus, affecting liveborn infant  
 before the onset of labor 763.81  
 during labor 763.82  
 unspecified as to time of onset 763.83  
 intrauterine  
 before the onset of labor 763.81  
 during labor 763.82  
 unspecified as to time of onset 763.83  
 newborn  
 before the onset of labor 763.81  
 during labor 763.82  
 unspecified as to time of onset 763.83  
 shadow 793.2  
 sounds NEC 785.3

**Abnormal, abnormality, abnormalities** — see also Anomaly — continued  
 hemoglobin (see also Disease, hemoglobin) 282.7  
 trait — see Trait, hemoglobin, abnormal  
 hemorrhage, uterus — see Hemorrhage, uterus  
 histology NEC 795.4  
 increase  
 in  
 appetite 783.6  
 development 783.9  
 involuntary movement 781.0  
 jaw closure 524.51  
 karyotype 795.2  
 knee jerk 796.1  
 labor NEC 661.9 **✓**  
 affecting fetus or newborn 763.7  
 laboratory findings — see Findings, abnormal  
 length, organ or site, congenital — see Distortion  
 liver function test 790.6  
 loss of height 781.91  
 loss of weight 783.21  
 lung shadow 793.1  
 mammogram 793.80  
 calcification 793.89  
 calculus 793.89  
 microcalcification 793.81  
 Mantoux test 795.5  
 membranes (fetal)  
 affecting fetus or newborn 762.9  
 complicating pregnancy 658.8 **✓**  
 menstruation — see Menstruation  
 metabolism (see also condition) 783.9  
 movement 781.0  
 disorder NEC 333.90  
 sleep related, unspecified 780.58  
 specified NEC 333.99  
 head 781.0  
 involuntary 781.0  
 specified type NEC 333.99  
 muscle contraction, localized 728.85  
 myoglobin (Aberdeen) (Annapolis) 289.9  
 narrowness, eyelid 743.62  
 optokinetic response 379.57  
 organs or tissues of pelvis NEC  
 in pregnancy or childbirth 654.9 **✓**  
 affecting fetus or newborn 763.89  
 causing obstructed labor 660.2 **✓**  
 affecting fetus or newborn 763.1  
 origin — see Malposition, congenital  
 palmar creases 757.2  
 Papanicolaou (smear)  
 anus 796.70  
 with  
 atypical squamous cells  
 cannot exclude high grade  
 squamous intraepithelial lesion (ASC-H) 796.72  
 of undetermined significance (ASC-US) 796.71  
 cytologic evidence of malignancy 796.76  
 high grade squamous intraepithelial lesion (HGSIL) 796.74  
 low grade squamous intraepithelial lesion (LGSIL) 796.73  
 glandular 796.70  
 specified finding NEC 796.79  
 cervix 795.00  
 with  
 atypical squamous cells  
 cannot exclude high grade  
 squamous intraepithelial lesion (ASC-H) 795.02  
 of undetermined significance (ASC-US) 795.01  
 cytologic evidence of malignancy 795.06  
 high grade squamous intraepithelial lesion (HGSIL) 795.04



#### ✓4<sup>th</sup> 531 Gastric ulcer

**[INCLUDES]** ulcer (peptic):  
prepyloric  
pylorus  
stomach

Use additional E code to identify drug, if drug-induced

**[EXCLUDES]** peptic ulcer NOS (533.0–533.9)

The following fifth-digit subclassification is for use with category 531:  
**0** without mention of obstruction  
**1** with obstruction

**DEF:** Destruction of tissue in lumen of stomach due to action of gastric acid and pepsin on gastric mucosa decreasing resistance to ulcers.

**AHA:** 1Q, '91, 15; 4Q, '90, 27

§ ✓5<sup>th</sup> 531.0 Acute with hemorrhage [0-1] **MCC**  
**CC Excl:** 251.5, 456.0, 530.20–530.21, 530.7, 530.82, 530.85, 531.00–534.91, 535.01, 535.11, 535.21, 535.31, 535.41, 535.51, 535.61, 537.83, 537.89–538, 562.02–562.03, 562.12–562.13, 569.3, 569.85, 578.0–578.9  
**AHA:** N-D, '84, 15

§ ✓5<sup>th</sup> 531.1 Acute with perforation [0-1] **MCC**  
**CC Excl:** See code 531.0

§ ✓5<sup>th</sup> 531.2 Acute with hemorrhage and perforation [0-1] **MCC**  
**CC Excl:** See code 531.0

§ ✓5<sup>th</sup> 531.3 Acute without mention of hemorrhage or perforation [0-1] **MCC 1 CC 0**  
**CC Excl:** See code 531.0

§ ✓5<sup>th</sup> 531.4 Chronic or unspecified with hemorrhage [0-1] **MCC**  
**CC Excl:** See code 531.0  
**AHA:** 4Q, '90, 22  
**K25.4** Chronic/unspecified gastric ulcer w/hemorrhage **I-10**

§ ✓5<sup>th</sup> 531.5 Chronic or unspecified with perforation [0-1] **MCC**  
**CC Excl:** See code 531.0

§ ✓5<sup>th</sup> 531.6 Chronic or unspecified with hemorrhage and perforation [0-1] **MCC**  
**CC Excl:** See code 531.0

§ ✓5<sup>th</sup> 531.7 Chronic without mention of hemorrhage or perforation [0-1] **MCC 1**  
**CC Excl:** For code 531.71: see code 531.0

§ ✓5<sup>th</sup> 531.9 Unspecified as acute or chronic, without mention of hemorrhage or perforation [0-1] **MCC 1**  
**CC Excl:** For code 531.91: see code 531.0  
**K25.9** Gastric ulcer uns acute/chronic w/o hem/perf **I-10**

#### ✓4<sup>th</sup> 532 Duodenal ulcer

**[INCLUDES]** erosion (acute) of duodenum  
ulcer (peptic):  
duodenum  
postpyloric

Use additional E code to identify drug, if drug-induced

**[EXCLUDES]** peptic ulcer NOS (533.0–533.9)

The following fifth-digit subclassification is for use with category 532:

**0** without mention of obstruction  
**1** with obstruction

**DEF:** Ulcers in duodenum due to action of gastric acid and pepsin on mucosa decreasing resistance to ulcers.

**AHA:** 4Q, '90, 27; 1Q, '91, 15

§ ✓5<sup>th</sup> 532.0 Acute with hemorrhage [0-1] **MCC**  
**For code 532.00:** 251.5, 456.0, 530.20–530.21, 530.7, 530.82, 530.85, 531.00–534.91, 535.01, 535.11, 535.21, 535.31, 535.41, 535.51, 535.61, 537.83, 537.89–538, 562.02–562.03, 562.12–562.13, 569.3, 569.85, 578.0–578.9  
**AHA:** 4Q, '90, 22

§ ✓5<sup>th</sup> 532.1 Acute with perforation [0-1] **MCC**  
**CC Excl:** See code 532.0

§ ✓5<sup>th</sup> 532.2 Acute with hemorrhage and perforation [0-1] **MCC**  
**CC Excl:** See code 532.0

§ ✓5<sup>th</sup> 532.3 Acute without mention of hemorrhage or perforation [0-1] **MCC 1 CC 0**  
**For code 532.30:** 251.5, 456.0, 530.7, 530.82, 531.00–534.91, 535.01, 535.11, 535.21, 535.31, 535.41, 535.51, 535.61, 537.83, 537.89–538, 562.02–562.03, 562.12–562.13, 569.3, 569.85, 578.0–578.9; **For code 532.31:** 251.5, 456.0, 530.20–530.21, 530.7, 530.82, 530.85, 531.00–534.91, 535.01, 535.11, 535.21, 535.31, 535.41, 535.51, 535.61, 537.83, 537.89–538, 562.02–562.03, 562.12–562.13, 569.3, 569.85, 578.0–578.9

§ ✓5<sup>th</sup> 532.4 Chronic or unspecified with hemorrhage [0-1] **MCC**  
**CC Excl:** See code 532.0  
**K26.4** Chronic/unspecified duodenal ulcer w/hemorrhage **I-10**

§ ✓5<sup>th</sup> 532.5 Chronic or unspecified with perforation [0-1] **MCC**  
**CC Excl:** See code 532.0

§ ✓5<sup>th</sup> 532.6 Chronic or unspecified with hemorrhage and perforation [0-1] **MCC**  
**CC Excl:** See code 532.0

§ ✓5<sup>th</sup> 532.7 Chronic without mention of hemorrhage or perforation [0-1] **MCC 1**  
**CC Excl:** For code 532.71: See code 532.0

§ ✓5<sup>th</sup> 532.9 Unspecified as acute or chronic, without mention of hemorrhage or perforation [0-1] **MCC 1**  
**CC Excl:** For code 532.91: See code 532.0  
**K26.9** Duodenal ulcer uns acute/chronic w/o hem/perf **I-10**

#### ✓4<sup>th</sup> 533 Peptic ulcer, site unspecified

**[INCLUDES]** gastroduodenal ulcer NOS  
peptic ulcer NOS  
stress ulcer NOS

Use additional E code to identify drug, if drug-induced

**[EXCLUDES]** peptic ulcer:  
duodenal (532.0–532.9)  
gastric (531.0–531.9)

The following fifth-digit subclassification is for use with category 533:  
**0** without mention of obstruction  
**1** with obstruction

**DEF:** Ulcer of mucous membrane of esophagus, stomach or duodenum due to gastric acid secretion.  
**AHA:** 1Q, '91, 15; 4Q, '90, 27

§ ✓5<sup>th</sup> 533.0 Acute with hemorrhage [0-1] **MCC**  
**CC Excl:** See code 532.0

§ ✓5<sup>th</sup> 533.1 Acute with perforation [0-1] **MCC**  
**CC Excl:** See code 533.0

§ ✓5<sup>th</sup> 533.2 Acute with hemorrhage and perforation [0-1] **MCC**  
**CC Excl:** See code 533.0

§ ✓5<sup>th</sup> 533.3 Acute without mention of hemorrhage and perforation [0-1] **MCC 1 CC 0**  
**CC Excl:** See code: 533.0

§ Requires fifth digit. Valid digits are in [brackets] under each code. See appropriate category for codes and definitions.

✓4<sup>th</sup>

Additional Digit Required

Unacceptable PDx

Manifestation Code

Hospital Acquired Condition

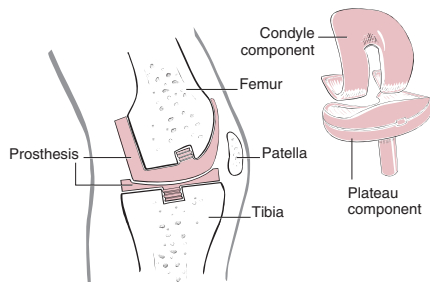
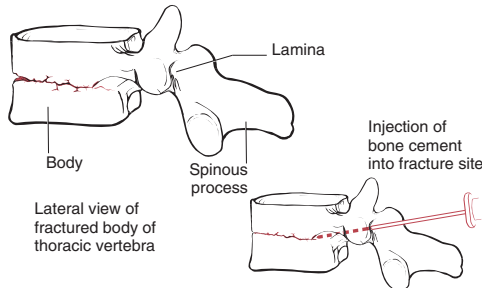
▶◀ Revised Text

● New Code

▲ Revised Code Title

2013 ICD-9-CM

Volume 1 – 179

**Total Knee Replacement****Vertebroplasty****81.55 Revision of knee replacement, not otherwise specified**

Code also any removal of (cement) (joint) spacer (84.57)

**EXCLUDES** arthrodesis of knee (81.22)  
revision of knee replacement, components specified (00.80-00.84)

AHA: 4Q, '05, 113; 2Q, '97, 10

**81.56 Total ankle replacement****81.57 Replacement of joint of foot and toe****81.59 Revision of joint replacement of lower extremity, not elsewhere classified****✓4<sup>th</sup> 81.6 Other procedures on spine****NOTE** Number of vertebrae

The vertebral spine consists of 25 vertebrae in the following order and number:

cervical: C1 (atlas), C2 (axis), C3, C4, C5, C6, C7

thoracic or dorsal: T1, T2, T3, T4, T5, T6, T7, T8, T9, T10, T11, T12

lumbar and sacral: L1, L2, L3, L4, L5, S1

Coders should report only one code from the series 81.62-81.64 to show the total number of vertebrae fused on the patient.

Code also the level and approach of the fusion or refusion (81.00-81.08, 81.30-81.39)

AHA: 4Q, '03, 99

**81.62 Fusion or refusion of 2-3 vertebrae**

AHA: ▶ 1Q, '10, 23; ◀ 2Q, '09, 4-5; 2Q, '08, 14; 1Q, '08, 5; 1Q, '07, 20; 1Q, '06, 12, 13; 4Q, '05, 123; 4Q, '03, 99

**81.63 Fusion or refusion of 4-8 vertebrae**

AHA: ▶ 1Q, '10, 23; ◀ 4Q, '03, 99-101

**81.64 Fusion or refusion of 9 or more vertebrae**

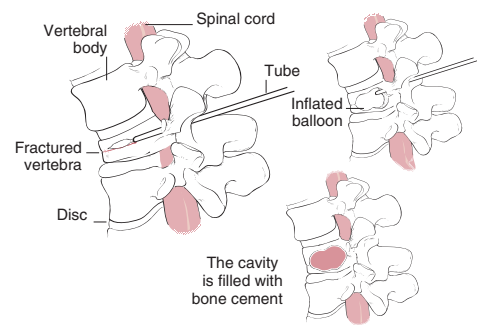
AHA: 4Q, '03, 99

**81.65 Percutaneous vertebroplasty**

Injection of bone void filler (cement) (polymethylmethacrylate) (PMMA) into the diseased or fractured vertebral body

**EXCLUDES** kyphoplasty (81.66)  
percutaneous vertebral augmentation (81.66)

AHA: 2Q, '08, 15

**Percutaneous Vertebral Augmentation****81.66 Percutaneous vertebral augmentation****Arcuoplasty**

Insertion of inflatable balloon, bone tamp, or other device displacing (removing) (compacting) bone to create a space (cavity) (void) prior to the injection of bone void filler (cement) (polymethylmethacrylate) (PMMA) or other substance

**Kyphoplasty****SKyphoplasty****Spineoplasty**

**EXCLUDES** percutaneous vertebroplasty (81.65)

AHA: 1Q, '07, 5, 7; 3Q, '06, 13; 4Q, '04, 126

**TIP:** Assign a separate code from subcategory 77.4 for bone biopsy, if performed with percutaneous vertebral augmentation.

**✓4<sup>th</sup> 81.7 Arthroplasty and repair of hand, fingers, and wrist**

**INCLUDES** arthroplasty of hand and finger with:  
external traction or fixation  
graft of bone (chips) or cartilage  
internal fixation device or prosthesis

**EXCLUDES** operations on muscle, tendon, and fascia of hand (82.01-82.99)

**DEF:** Plastic surgery of hand, fingers and wrist joints.

**81.71 Arthroplasty of metacarpophalangeal and interphalangeal joint with implant****81.72 Arthroplasty of metacarpophalangeal and interphalangeal joint without implant**

AHA: 1Q, '93, 28

**81.73 Total wrist replacement****81.74 Arthroplasty of carpocarpal or carpometacarpal joint with implant****81.75 Arthroplasty of carpocarpal or carpometacarpal joint without implant**

AHA: 3Q, '93, 8

**81.79 Other repair of hand, fingers, and wrist****✓4<sup>th</sup> 81.8 Arthroplasty and repair of shoulder and elbow**

**INCLUDES** arthroplasty of upper limb NEC with:  
external traction or fixation  
graft of bone (chips) or cartilage  
internal fixation device or prosthesis

**81.80 Other total shoulder replacement**

**EXCLUDES** ▶ reverse total shoulder replacement (81.88) ◀

AHA: 2Q, '08, 5

**81.81 Partial shoulder replacement****81.82 Repair of recurrent dislocation of shoulder**

AHA: 3Q, '95, 15

**81.83 Other repair of shoulder**

AHA: 1Q, '02, 9; 4Q, '01, 51; 2Q, '00, 14; 3Q, '93, 5  
**TIP:** Assign for SLAP (superior labral anterior posterior—glenoid labrum lesion) repair.

**81.84 Total elbow replacement**

Partial elbow replacement

**81.85 Other repair of elbow**