

# 2010 ICD-9-CM Volumes 1 & 2

Professional edition, valid for use October 1, 2009-September 30, 2010

## Table of Contents

### Preface & Introduction

Introduction .....	1
Conventions Use in the ICD-9-CM .....	2
2010 Tabular List Updates.....	5
ICD-9-CM Official Guidelines for Coding and Reporting.....	12

### PQRI Coding Guidance

PQRI Measure Index	
PQRI Coding Specifications .....	PQRI-1

### Alphabetic Index to Diseases (Volume 2)

AAT Deficiency – Hypertelorism.....	Volume 2-1
Hypertension Table.....	Volume 2-148
Hyperthecosis, ovary – Neoplasia .....	Volume 2-150
Table of Neoplasms .....	Volume 2-194
Neovascularization – Zymotic.....	Volume 2-206
Table of Drugs and Chemicals .....	Volume 2-294
Index to External Causes of Injury .....	Volume 2-326

### Tabular List of Diseases (Volume 1)

Chapter 1: Infectious and Parasitic Diseases (001-139) .....	Volume 1-1
Chapter 2: Neoplasms (140-239)....	Volume 1-25
Chapter 3: Endocrine, Nutritional, and Metabolic Diseases and Immunity Disorders (240-279) .....	Volume 1-49
Chapter 4: Diseases of Blood and Blood Forming Organs (280-289).....	Volume 1-62
Chapter 5: Mental Disorders (290-319) .....	Volume 1-68
Chapter 6: Diseases of Nervous System and Sense Organs (320-389) .....	Volume 1-82
Chapter 7: Diseases of Circulatory System (390-459) .....	Volume 1-116
Chapter 8: Diseases of Respiratory System (460-519).....	Volume 1-137
Chapter 9: Diseases of Digestive System (520-579) .....	Volume 1-148

Chapter 10: Diseases of Genitourinary System (580-629).....	Volume 1-167
Chapter 11: Complications of Pregnancy, Childbirth, and the Puerperium (630-677) .....	Volume 1-183
Chapter 12: Diseases of Skin and Subcutaneous Tissue (680-709) .....	Volume 1-199
Chapter 13: Diseases of Musculoskeletal and Connective Tissue (710-739).....	Volume 1-208
Chapter 14: Congenital Anomalies (740-759) .....	Volume 1-223
Chapter 15: Certain Conditions Originating in the Perinatal Period (760-779) .....	Volume 1-237
Chapter 16: Signs, Symptoms and Ill-Defined Conditions (780-799).....	Volume 1-246
Chapter 17: Injury and Poisoning (800-999) .....	Volume 1-260

### Tabular List of Supplemental Classifications (Volume 1, Section 2)

Chapter 18: Classification of Factors Influencing Health Status and Contact with Health Service (V01-V89).....	Volume 1-307
Chapter 19: Supplemental Classification of External Causes of Injury and Poisoning (E000-E999) .....	Volume 335

### Official ICD-9-CM Government Appendices

Appendix A: Morphology of Neoplasms .....	Appendices-1
Appendix C: Classification of Drugs by American Hospital Formulary Services List Number and their ICD-9-CM Equivalents .....	Appendices-5
Appendix D: Classification of Industrial Accidents According to Agency .....	Appendices-7
Appendix E: List of Three-Digit Categories .....	Appendices-8

**4<sup>th</sup> 451 Phlebitis and thrombophlebitis**

**Includes** endophlebitis  
inflammation, vein  
periphlebitis  
suppurative phlebitis

Use additional E code to identify drug if drug-induced

**Excludes** that complicating:

abortion (634-638 with .7, 639.8)  
ectopic or molar pregnancy (639.8)  
pregnancy, childbirth, or the puerperium (640-649)  
that due to or following:  
implant or catheter device (996.61-996.62)  
infusion, perfusion, or transfusion (999.2)

**451.0 Of superficial vessels of lower extremities**

Saphenous vein (greater) (lesser)

**5<sup>th</sup> 451.1 Of deep vessels of lower extremities****451.11 Femoral vein (deep) (superficial)****451.19 Other**

**180.209 Phlebitis and thrombophlebitis of unspecified deep vessels of unspecified lower extremity**

Femoropopliteal vein  
Popliteal vein  
Tibial vein

**451.2 Of lower extremities, unspecified****5<sup>th</sup> 451.8 Of other sites**

**Excludes** intracranial venous sinus (325)  
nonpyogenic (437.6)  
portal (vein) (572.1)

**451.81 Iliac vein****451.82 Of superficial veins of upper extremities**

Antecubital vein  
Basilic vein  
Cephalic vein

**451.83 Of deep veins of upper extremities**

Brachial vein  
Radial vein  
Ulnar vein

**451.84 Of upper extremities, unspecified****451.89 Other**

Axillary vein  
Jugular vein  
Subclavian vein  
Thrombophlebitis of breast (Mondor's disease)

**451.9 Of unspecified site****452 Portal vein thrombosis**

Portal (vein) obstruction

**Excludes** hepatic vein thrombosis (453.0)  
phlebitis of portal vein (572.1)

**4<sup>th</sup> 453 Other venous embolism and thrombosis**

**Excludes** that complicating:

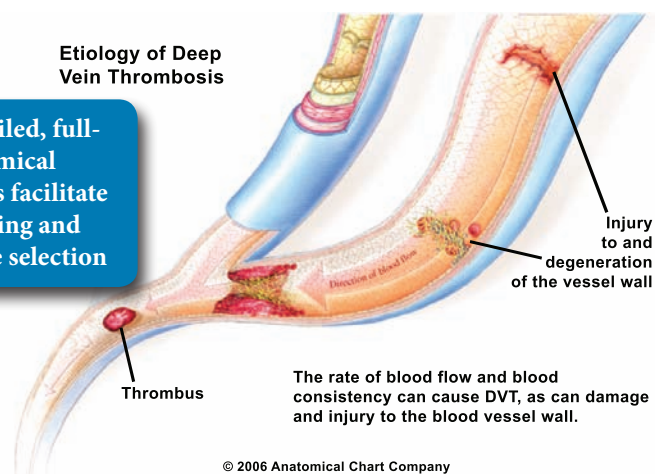
abortion (634-638 with .7, 639.8)  
ectopic or molar pregnancy (639.8)  
pregnancy, childbirth, or the puerperium (640-649)  
that with inflammation, phlebitis, and thrombophlebitis (451.0-451.9)

**453.0 Budd-Chiari syndrome**

Hepatic vein thrombosis

**453.1 Thrombophlebitis migrans****▲ 453.2 Of inferior vena cava****453.3 Of renal vein****Etiology of Deep Vein Thrombosis**

Richly-detailed, full-color anatomical illustrations facilitate understanding and proper code selection



© 2006 Anatomical Chart Company

**▲ 5<sup>th</sup> 453.4 Acute venous embolism and thrombosis of deep vessels of lower extremity**

**Rationale:** It has been deemed to be beneficial to be able to identify patients with sub-acute or chronic deep vein thrombosis who are receiving anticoagulation treatment but are no longer in the initial episode of care. Patients with venous thromboembolic disease often require a subsequent hospital admission for treatment of a complication, such as extension of the initial thrombosis or anticoagulant related bleeding. In addition, when these patients are readmitted for treatment of an underlying surgical problem, their deep-vein thrombosis is frequently coded as an "active" thrombosis, presumably because they are still receiving ongoing anticoagulant treatment.

The revisions to 453.40-453.42 and the creation of new codes 453.40-453.89 are modeled after the modifications of acute myocardial infarction codes, which distinguish between "initial episode of care," "subsequent episode of care," and "episode of care unspecified." The use of the terms "acute," "sub-acute" and "chronic" are consistent with similar terms used in the 2002 modifications to the heart failure codes.

**▲ 453.40 Acute venous embolism and thrombosis of unspecified deep vessels of lower extremity**

Deep vein thrombosis NOS  
DVT NOS

**▲ 453.41 Acute venous embolism and thrombosis of deep vessels of proximal lower extremity**

Femoral  
Iliac  
Popliteal  
Thigh  
Upper leg NOS

**▲ 453.42 Acute venous embolism and thrombosis of deep vessels of distal lower extremity**

Calf  
Lower leg NOS  
Peroneal  
Tibial

**● 5<sup>th</sup> 453.5 Chronic venous embolism and thrombosis of deep vessels of lower extremity**

Use additional code, if applicable, for associated long-term (current) use of anticoagulants (V58.61)

**Excludes** personal history of venous thrombosis and embolism (V12.51)

**● 453.50 Chronic venous embolism and thrombosis of unspecified deep vessels of lower extremity****● 453.51 Chronic venous embolism and thrombosis of deep vessels of proximal lower extremity****● 453.52 Chronic venous embolism and thrombosis of deep vessels of distal lower extremity**

Code change rationales, presented at the code-level, provide the user with valuable information that will impact coding policies

Tabular List revisions use underlines (new text) and ~~strikethrough~~ (deleted text) to enhance understanding of annual updates

Symbol key located at the bottom of each page eliminates any confusion about the meaning of color bars and symbols

**4<sup>th</sup> 585 Chronic kidney disease (CKD)****Includes** chronic uremia

Code first hypertensive chronic kidney disease, if applicable (403.00-403.91, 404.00-404.93)

Use additional code to identify kidney transplant status, manifestation as:  
uremic:  
neuropathy (357.4)  
pericarditis (420.0)**Excerpts from the Official ICD-9-CM Guidelines are placed conveniently at the code level****ICD-9-CM Official Guidelines (Chapter 10):****a. Chronic kidney disease****1) Stages of chronic kidney disease (CKD)**

The ICD-9-CM classifies CKD based on severity. The severity of CKD is designated by stages I-V. Stage II, code 585.2, equates to mild CKD; stage III, code 585.3, equates to moderate CKD; and stage IV, code 585.4, equates to severe CKD. Code 585.6, End stage renal disease (ESRD), is assigned when the provider has documented end-stage-renal disease (ESRD).

If both a stage of CKD and ESRD are documented, assign code 585.6 only.

**2) Chronic kidney disease and kidney transplant status**

Patients who have undergone kidney transplant may still have some form of CKD, because the kidney transplant may not fully restore kidney function. Therefore, the presence of CKD alone does not constitute a transplant complication. Assign the appropriate 585 code for the patient's stage of CKD and code V42.0. If a transplant complication such as failure or rejection is documented, see section I.C.17.f.1.b for information on coding complications of a kidney transplant. If the documentation is unclear as to whether the patient has a complication of the transplant, query the provider.

**3) Chronic kidney disease with other conditions**

Patients with CKD may also suffer from other serious conditions, most commonly diabetes mellitus and hypertension. The sequencing of the CKD code in relationship to codes for other contributing conditions is based on the conventions in the tabular list.

See I.C.3.a.4 for sequencing instructions for diabetes.

See I.C.4.a.1 for anemia in CKD.

See I.C.7.a.3 for hypertensive chronic kidney disease.

See I.C.17.f.1.b, Kidney transplant complications, for instructions on coding of documented rejection or failure.

**Layman's:** The stages of CKD are differentiated by the glomerular filtration rate (GFR) of the patient, as follows:

**Stage I:** GFR >90 ml/min/1.73 m<sup>2</sup>

**Stage II:** GFR 60-89 ml/min/1.73 m<sup>2</sup>

**Stage III:** GFR 30-59 ml/min/1.73 m<sup>2</sup>

**Stage IV:** GFR 15-29 ml/min/1.73 m<sup>2</sup>

**Stage V:** GFR <15 ml/min/1.73 m<sup>2</sup>

**ESRD:** GFR <15 ml/min/1.73 m<sup>2</sup> and patient is on dialysis or undergoing kidney transplantation

**Lay descriptions give coders additional information to facilitate proper code selection****585.1 Chronic kidney disease, Stage I****N18.1 Chronic kidney disease, stage I****585.2 Chronic kidney disease, Stage II (mild)****N18.2 Chronic kidney disease, stage II (mild)****585.3 Chronic kidney disease, Stage III (moderate)****N18.3 Chronic kidney disease, stage III (moderate)****585.4 Chronic kidney disease, Stage IV (severe) I 2 I, I 2 2, I 2 3, I 3 5, I 5 3, I 7 2****N18.4 Chronic kidney disease, stage IV (severe)****ICD-10-CM equivalents, placed discreetly beneath the most commonly used ICD-9 codes, ease the transition to the new diagnostic code set****585.5 Chronic kidney disease, Stage V I 2 I, I 2 2, I 2 3, I 3 5, I 5 3, I 7 2****N18.5 Chronic kidney disease, stage V****Excludes** chronic kidney disease, stage V requiring chronic dialysis (585.6)**585.6 End stage renal disease I 7 9, I 8 I, I 8 2, I 7 2, I 7 4, I 7 5****N18.6 End stage renal disease**

Chronic kidney disease

**585.9 Chronic kidney disease**

Chronic renal disease

Chronic renal failure

Chronic renal insufficiency

**Actual Medicare PQRI measure numbers at the code level enable efficient reporting and help maximize bonus payments****Normal****Chronic Kidney Disease**

© 2008 Fairman Studios, LLC. All Rights Reserved.

**586 Renal failure, unspecified****N19 Unspecified renal failure**

Uremia NOS

**Excludes** following labor and delivery (669.3)  
posttraumatic renal failure (958.5)  
that complicating:  
abortion (634-638 with .3, 639.3)  
ectopic or molar pregnancy (639.3)  
uremia:  
extrarenal (788.9)  
prerenal (788.9)**587 Renal sclerosis, unspecified****Includes** atrophy of kidney

Atrophy of kidney

Contracted kidney

Renal:

cirrhosis

fibrosis

**4<sup>th</sup> 588 Disorders resulting from impaired renal function****Excludes** secondary hypertension (405.0-405.9)**588.0 Renal osteodystrophy**

Azotemic osteodystrophy

Phosphate-losing tubular disorders

Renal:

dwarfism

infantilism

rickets

**588.1 Nephrogenic diabetes insipidus****Excludes** diabetes insipidus NOS (253.5)