

LAPAROSCOPIC SURGICAL CODING THROUGH THE “EYES” OF THE SURGEON



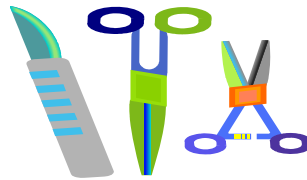
PRESENTED BY: JEANNE PLOUFFE, CPC, CGSC

Today's presentation you will see video of actual
laparoscopic surgery for hernia defects,
diseased gallbladder, and GERD



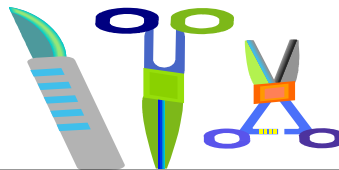
SURGICAL INSTRUMENTS

- 1) **Harmonic Scalpel** - *Cutting instrument used during surgical procedure to simultaneously cut and coagulate tissue*
- 2) **Endoscopic Peanut/Cherry Dissector** - *Used during surgical procedures for dissection, retraction, and gentle manipulation*
- 3) **Liver/Snake Retractor** - *Used for consistent stable retraction*



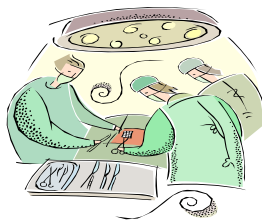
SURGICAL INSTRUMENTS

- 4) **Dissection Balloon** - *Uses a distention balloon (either oval or round) to separate tissue planes, forming a discrete cavity for inguinal hernia repair*
- 5) **Ultrapro Mesh** - *A lightweight and partially absorbable mesh used for repairing hernias and other abdominal fascial defects*
- 6) **AbsorbaTack** - *THIS TACK IS USED FOR PLACEMENT OF THE MESH*



SURGERIES

- 1) *LAPAROSCOPIC INGUINAL HERNIA REPAIR*
- 2) *LAPAROSCOPIC VENTRAL HERNIA REPAIR*
- 3) *LAPAROSCOPIC CHOLECYSTECTOMY*
- 4) *LAPAROSCOPIC NISSEN FUNDOPLICATION*



LAPAROSCOPIC INGUINAL HERNIA REPAIR

- **CPT® CODE:** 49650- LAPAROSCOPIC SURGICAL REPAIR INITIAL INGUINAL HERNIA
- **MODIFIER:** 50- BILATERAL PROCEDURE
- **DIAGNOSIS CODES:** 550.90- INGUINAL HERNIA, UNILATERAL OR UNSPECIFIED WITHOUT MENTION OF OBSTRUCTION OR GANGRENE
- 550.92- INGUINAL HERNIA, BILATERAL WITHOUT MENTION OF OBSTRUCTION OR GANGRENE

SURGICAL HIGHLIGHTS-INGUNIAL HERNIA REPAIR

- DISSECTION BALLOON IS INSERTED TO SEPARATE TISSUE FROM PLANE
- COPPER'S LIGAMENT- WHITE AREA
- BALLOON IS REMOVED
- TOCAR-WORKING PORTS- 5MM & GRASPERS
- CORD LIPOMA
- RIGHT PERITONEUM

SURGICAL HIGHLIGHTS-CONT.

- PUBIC ARCH
- SPERMATIC CORD
- HERNIA REPAIR
- MESH PLACEMENT AND TACKING

- THIS IS THE ACTUAL HERNIA REPAIR VIDEO THAT WILL BE UPLOADED
- APPROXIMATE TIME OF VIDEO - 10 MINUTES

LAPAROSCOPIC VENTRAL HERNIA
REPAIR

- **CPT® CODE:** 49653- LAPAROSCOPY SURGICAL, REPAIR, **VENTRAL**, UMBILICAL, SPIGELIAN OR EPIGASTRIC HERNIA (INCLUDES MESH INSERTION WHEN PERFORMED)- **INCARCERATED** OR STRANGULATED
- **DIAGNOSIS CODE:** 552.20- VENTRAL HERNIA, WITH OBSTRUCTION

SURGICAL HIGHLIGHTS-VENTRAL **HERNIA REPAIR**

- HOLE IN ABDOMINAL WALL
- INCARCERATED VENTRAL HERNIA-NON REDUCIBLE
- NEEDS TO MAKE SURE HAS SECURE AREA TO PLACE TACKS
- MESH IS INSERTED
- TACKING OF MESH
- MAKING SURE MESH IS SECURE

- ACTUAL VENTRAL HERNIA REPAIR THAT WILL BE UPLOADED
- APPROXIMATE TIME OF VIDEO - 15 MINUTES

LAPAROSCOPIC CHOLECYSTECTOMY AND TRU-CUT LIVER BIOPSY

- **CPT® CODE:** 47562- LAPAROSCOPY, SURGICAL CHOLECYSTECTOMY
- **CPT® CODE:** +47001- BIOPSY OF LIVER WHEN DONE FOR INDICATED PURPOSE AT TIME OF OTHER MAJOR PROCEDURE (LIST SEPARATELY IN ADDITION TO CODE FOR PRIMARY PROCEDURE)
- **DIAGNOSIS CODE FOR LIVER BIOPSY:** 571.5- CIRRHOSIS OF LIVER WITHOUT MENTION OF ALCHOL

POSSIBLE DIAGNOSIS CODES

- 574.20- **CHOLELITHIASIS**-CALCULUS OF GALLBLADDER WITHOUT MENTION OF CHOLEYSTITIS; WITHOUT MENTION OF OBSTRUCTION
- 574.10- CALCULUS OF GALLBLADDER WITH OTHER CHOLECYSTITIS; WITHOUT MENTION OF OBSTRUCTION
- 574.00- CALCULUS OF GALLBLADDER WITH ACUTE CHOLECYSTITIS; WITHOUT MENTION OF OBSTRUCTION

POSSIBLE DIAGNOSIS CODES-CONT.

- 574.30- CALCULUS OF BILE DUCT WITH ACUTE CHOLECYSTITIS; WITHOUT MENTION OF OBSTRUCTION
- 574.60- CALCULUS OF GALLBLADDER AND BILE DUCT WITH ACUTE CHOLECYSTITIS; WITHOUT MENTION OF OBSTRUCTION
- 575.0- ACUTE CHOLECYSTITIS
- ADDITIONAL CODES CAN BE FOUND IN THE RANGE OF 574. THROUGH 576

SURGICAL HIGHLIGHTS- **LAPAROSCOPIC CHOLEYSTEATOMY**

- HARMONIC SCALPEL DISSECTION
- PLACEMENT OF CLIPS ON CYSTIC DUCT
- GALLBLADDER BEING GRASP
- LIVER BIOPSY
- GALLBLADDER BEING PLACED IN BAG TO BE REMOVED THROUGH THE XIPHOID PORT
- EXAMINATION AND IRRIGATION OF SURGICAL SITE

- ACTUAL LAPAROSCOPIC CHOLECYSTECTOMY AND LIVER BIOPSY VIDEO THAT WILL BE UPLOADED
- APPROXIMATE TIME OF VIDEO - 20 MINUTES

LAPAROSCOPIC NISSEN
FUNDOPLICATION

- **CPT CODE:** 43280- LAPAROSCOPY, SURGICAL, ESOPHAGOGASTRIC FUNDOPLASTY (eg, NISSEN, TOUPET PROCEDURE)
- **DIAGNOSIS CODE:** 530.81- GASTROESOPHAGEAL REFLUX

SURGICAL HIGHLIGHTS-LAPAROSCOPIC
NISSEN FUNDOPLICATION

- LIVER RETRACTOR (SNAKE)
- STOMACH, OMENTUM
- GASTROESOPHAGEAL JUNCTION
- GASTROHEPATIC LIGAMENT TRANSECTED
EXPOSING RIGHT CRUS OF DIAPHRAGM
- MOBILIZING THE GREATER CURVATURE OF
STOMACH WITH HARMONIC SCALPEL

SURGICAL HIGHLIGHTS-CONT.

- ENDOSCOPIC PEANUT USED TO DISSECT
WINDOW TO BRING STOMACH THROUGH
- GASTROSPLenic LIGAMENT TRANSECTED
- FUNDUS GRASPED, WITHDRAWN THROUGH
THE RETROESOPHAGEAL TISSUE PLANE
- STANDARD FUNDOPLICATION WRAP
- SUTURING OF WRAP TO ESOPHAGEAL WALL

- ACTUAL VIDEO OF LAPAROSCOPIC NISSEN FUNDOPLICATION THAT WILL BE UPLOADED
- APPROXIMATE TIME OF VIDEO - 30 MINUTES

- QUESTIONS????????



- THANK YOU FOR ATTENDING
- E-mail: jplouffe@abrazohealth.com